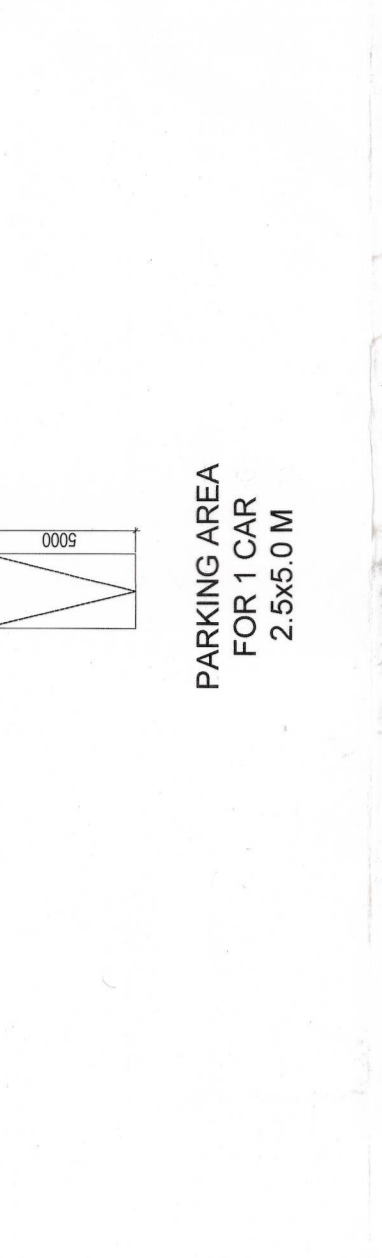


SECTION ID	L	B	Area	Length	Width	Area	Perimeter
A-1	1	1	12.350	12.350	12.350	12.350	
A-2	1	1	12.350	12.350	12.350	12.350	
A-3	1	1	12.350	12.350	12.350	12.350	
A-4	1	1	12.350	12.350	12.350	12.350	
A-5	1	1	12.350	12.350	12.350	12.350	
A-6	1	1	12.350	12.350	12.350	12.350	
A-7	1	1	12.350	12.350	12.350	12.350	
A-8	1	1	12.350	12.350	12.350	12.350	
A-9	1	1	12.350	12.350	12.350	12.350	
A-10	1	1	12.350	12.350	12.350	12.350	
A-11	1	1	12.350	12.350	12.350	12.350	
A-12	1	1	12.350	12.350	12.350	12.350	
A-13	1	1	12.350	12.350	12.350	12.350	
A-14	1	1	12.350	12.350	12.350	12.350	
A-15	1	1	12.350	12.350	12.350	12.350	
A-16	1	1	12.350	12.350	12.350	12.350	
A-17	1	1	12.350	12.350	12.350	12.350	
A-18	1	1	12.350	12.350	12.350	12.350	
A-19	1	1	12.350	12.350	12.350	12.350	
A-20	1	1	12.350	12.350	12.350	12.350	
A-21	1	1	12.350	12.350	12.350	12.350	
A-22	1	1	12.350	12.350	12.350	12.350	
A-23	1	1	12.350	12.350	12.350	12.350	
A-24	1	1	12.350	12.350	12.350	12.350	
TOTAL			487.4824	852.6151	526.1151	4421.51	

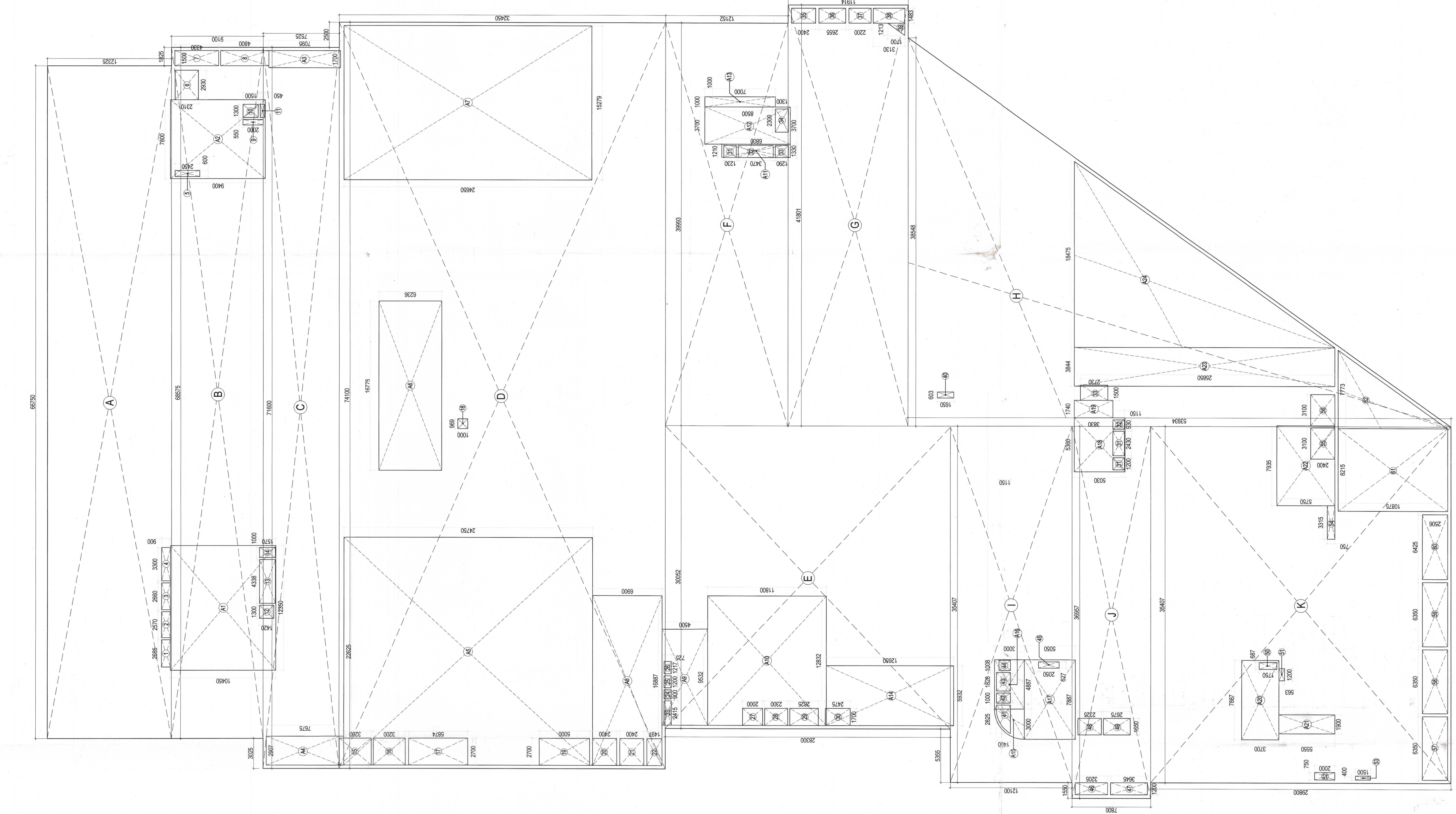
AREA CALCULATION FOR CAR PARKING OF BASEMENT -01 :-
 TOTAL COVID AREA OF BASEMENT-01 = 8692.65 SQM.
 TOTAL SERVICE AREA OF BASEMENT-01 = 2220.18 SQM.
 NET AREA FOR PARKING OF BASEMENT-01 = 8692.65 - 2220.18 = 6472.47 SQM.
 PROVISION OF CAR PARKING = 6372.47 SQM.
 PROPOSED CAR PARKING AT BASEMENT 01 = 288 CARS



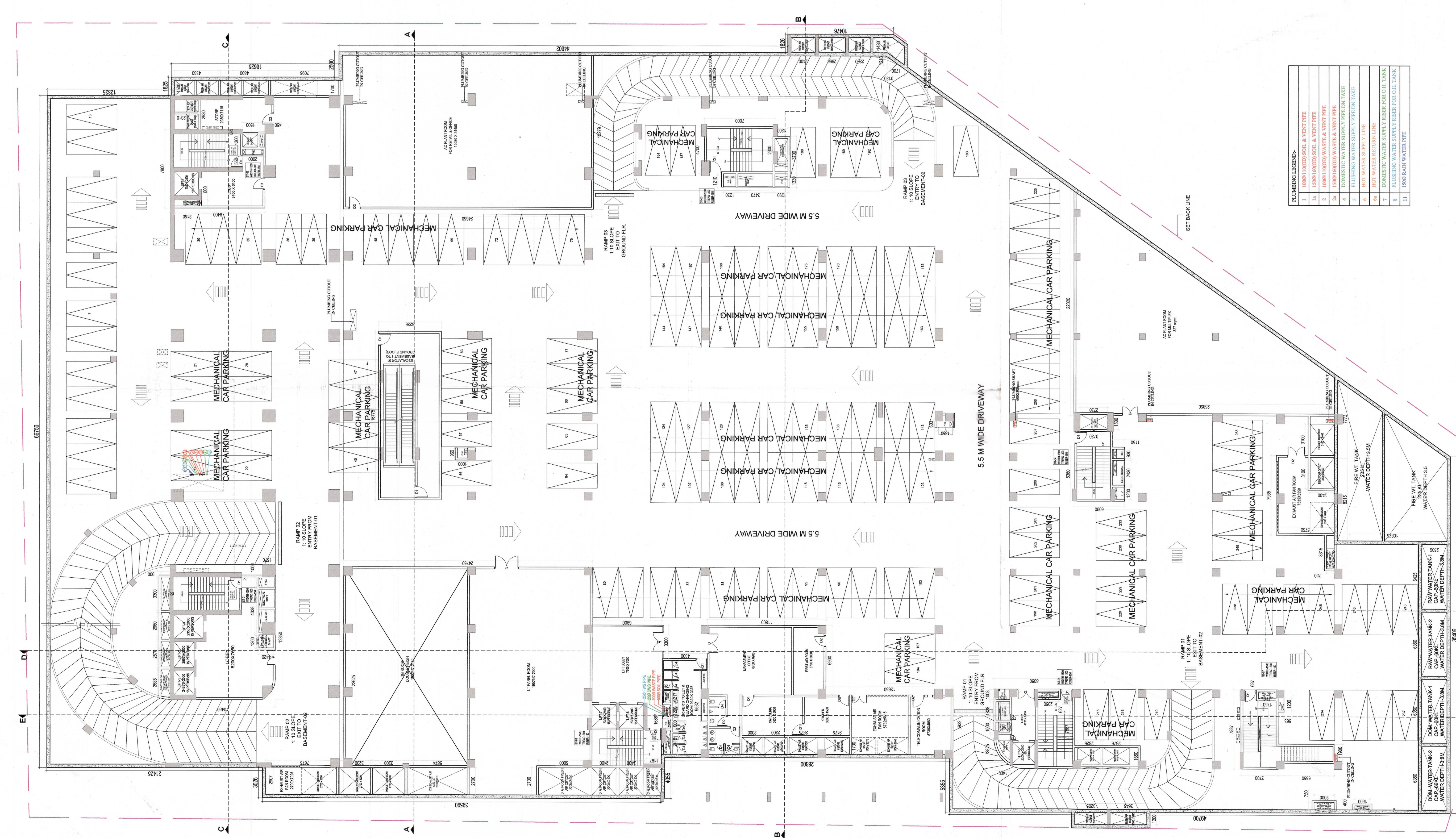
S.NO.	NAME	SIZE (MM)	COL. LVL.	UNTEL. LVL.
1	D	1500 X 2400	2400	2400
2	D1	900 X 2400	2400	2400
3	D2	900 X 2400	2400	2400
4	D3	600 X 2400	2400	2400
5	D4	750 X 2400	2400	2400

LEGEND	No.	Area (Sq. M)	Area (Sq. Ft)
A-1	1	12.350	132.26
A-2	1	7.800	84.28
A-3	1	12.350	132.26
A-4	1	12.350	132.26
A-5	1	22.825	245.97
A-6	1	16.775	180.99
A-7	1	15.275	164.60
A-8	1	9.525	102.89
A-9	1	12.833	138.00
A-10	1	3.300	35.42
A-11	1	3.300	35.42
A-12	1	1.000	10.76
A-13	1	5.915	63.69
A-14	1	4.89	52.46
A-15	1	7.89	84.83
A-16	1	1.74	18.63
A-17	1	3.70	39.58
A-18	1	5.56	59.65
A-19	1	3.70	39.58
A-20	1	1.90	20.45
A-21	1	1.90	20.45
A-22	1	1.90	20.45
A-23	1	1.90	20.45
A-24	1	1.90	20.45
TOTAL		167.28	1792.75

LEGEND	LENGTH (mm)	WIDTH (mm)	No.	AREA (sqm)
A-1	12.350	12.350	1	152.13
A-2	7.800	7.800	1	60.84
A-3	12.350	12.350	1	152.13
A-4	12.350	12.350	1	152.13
A-5	16.775	16.775	1	281.47
A-6	16.775	16.775	1	281.47
A-7	15.275	15.275	1	232.36
A-8	9.525	9.525	1	90.73
A-9	12.833	12.833	1	164.60
A-10	3.300	3.300	1	10.91
A-11	3.300	3.300	1	10.91
A-12	1.000	1.000	1	1.08
A-13	5.915	5.915	1	34.86
A-14	4.89	4.89	1	23.79
A-15	7.89	7.89	1	62.14
A-16	1.74	1.74	1	3.01
A-17	3.70	3.70	1	13.78
A-18	5.56	5.56	1	30.91
A-19	3.70	3.70	1	13.78
A-20	1.90	1.90	1	3.61
A-21	1.90	1.90	1	3.61
A-22	1.90	1.90	1	3.61
A-23	1.90	1.90	1	3.61
A-24	1.90	1.90	1	3.61
TOTAL ADDITIONS				228.47
TOTAL SUBTRACTIONS				16.320
TOTAL AREA OF BASEMENT-01 FLOOR				210.137



AREA DIAGRAM BASEMENT-01 FLOOR
SCALE 1:200



BASEMENT-01 PLAN
SCALE 1:200

APPROVED FOR THE CLIENT
 APPROVED FOR THE ARCHITECT
 APPROVED FOR THE ENGINEER
 APPROVED FOR THE SURVEYOR
 APPROVED FOR THE CONTRACTOR

OWNER
RMG DEVELOPERS PVT. LTD.

PROJECT TITLE
REVISED BUILDING PLAN OF COMMERCIAL COLONY MEASURING 4.00 ACRES (LICENCE NO.160 OF 2008 DATED 13.08.2008) IN SECTOR 37-C, GURGAON MANESAR URBAN COMPLEX

SCALE
1:200 (AO)

ARCHITECT'S SIGNATURE
RAJEEV KUMAR AGARWAL ARCHITECT CAROLLEES

OWNER'S SIGNATURE
(Signature)

PROJECT NO.
1200 (AO)

For RMG Developers Private Limited
 Director/Authorised Signatory

TITLE
BASEMENT -01

DATE
05-OCT-2017

DRAWING NO.
04/13

SHEET NO.
01

REVISIONS
 INFORMATION
 DESIGN
 TENDER
 ADVANCE COPY
 SUBMISSION DRG.
 GFC